



**MALHERBEX™**  
PROPERTY GROUP



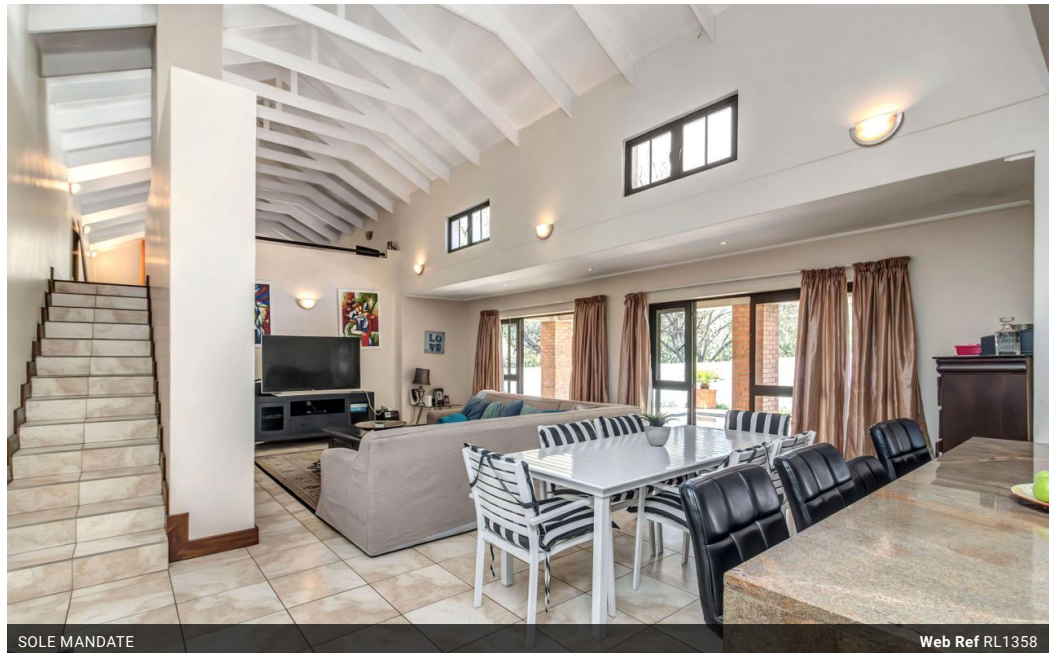
**Willie Malherbe**  
0834257174  
willie@malherbex.com

Contact Head Office

011 7869364

Unit 1 Cyrus House (Building 13) Mulberry Hill Office Park, Dainfern, Sandton, 2191

## 3 Bedroom Freestanding For Sale in Dainfern Golf Estate



SOLE MANDATE

Web Ref RL1358



# R4,750,000

**Monthly Bond Repayment** R49,028.95  
Calculated over 20 years at 11% with no deposit.

**Transfer Costs** R372,677.00    **Bond Costs** R59,150.00  
These calculations are only a guide. Please ask your conveyancer for exact calculations.

**Monthly Levy** R4,490

3    3.5    2

### Three bedroom Family Home in Dainfern Golf Estate

EXCLUSIVE SOLE AGENT

No Transfer Duty

Discover luxury living in a quiet area of the prestigious Dainfern Golf Estate. This stunning three-bedroom, three-bathroom home is perfect for families seeking comfort, elegance, and security. This property offers high ceilings and exposed beams with natural light streaming throughout the house. Everything you need for an exceptional lifestyle. The spacious kitchen, lounge with a gas fireplace, and dining room seamlessly lead to a large double sized covered patio, perfect for entertaining or relaxing. Outside, you'll find a gorgeous garden, large pool and an entertainment area, perfect for hosting gatherings, and a lovely garden for kids to play.

The offers offers a generous upstairs loft-lounge area, with space for a home study.  
The home includes, air conditioning in the...

### Features

**Pets Allowed** Yes

#### Interior

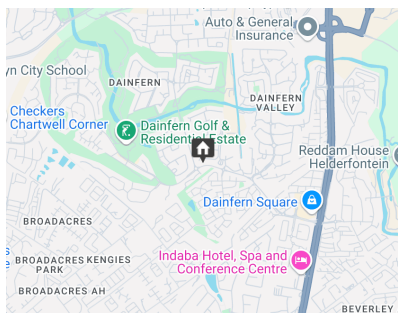
Bedrooms	3
Bathrooms	3.5
Recep. Rooms	3
Studies	1

#### Exterior

Garages	2
Dom. Accom.	1
Pool	Yes

#### Sizes

Land Size	589m <sup>2</sup>
-----------	-------------------



<https://www.malherbex.com>